



THE ECONOMICS OF  
LAND DEGRADATION

## ELD CAMPUS

### Module: The Economics of Land Degradation (ELD) Initiative



## **In this module you will learn about:**


- *Background and objectives of the ELD Initiative;*
- *The ELD Initiative's core partners and contributors;*
- *ELD's contribution to the SDGs;*
- *Similar initiatives under other UN environmental conventions;*
- *The approach of ELD (in general); and*
- *Past and present activities of the initiative*

If you would like to deepen your know-how on the initiative, further information is provided in the script on this module. Web-links to additional material are provided at the end of this presentation.

## The ELD Initiative

- ELD is a global initiative, initiated in 2012 by



- It is hosted by the German International Cooperation  in Bonn, Germany
- ELD mainly works at the science-policy interface
- Core partners of the ELD Initiative are research institutions, independent think tanks, government institutions, NGOs, and organisations working in the field of international cooperation

[www.eld-initiative.org](http://www.eld-initiative.org)

## Background

- The initiative was created against the background of an increasing rate of land degradation.
- At present, 52% of land used for agriculture worldwide is moderately or severely affected by soil degradation.
- This process results in the **loss of ecosystem services from land and land-based ecosystems**, that are necessary for human livelihoods.



©GIZ



©GIZ/Dirk Ostermeier



©GIZ/Christina Ketter

## Background

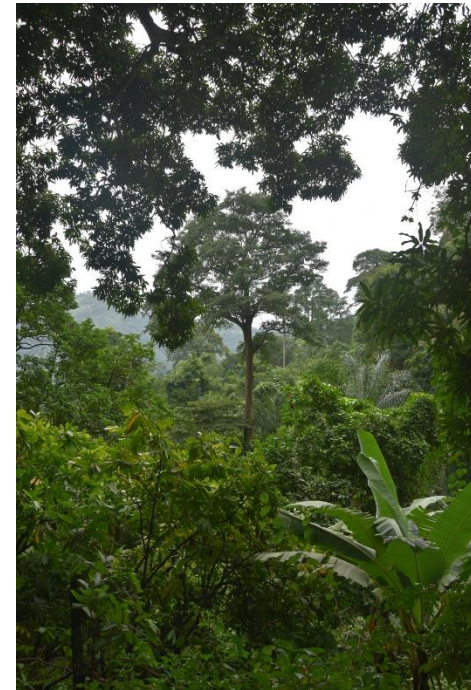
- **The ELD Initiative aims at bringing to light all the under-appreciated values of land and land-based ecosystem services**, which are often not considered in management and policy decisions.



© GIZ/Jörg Böhling



©GIZ/Ulrich Scholz



©GIZ

## Vision

The ELD network of partners share a joint vision, which is

- *to transform the global understanding of the economic value of productive land based on both market and non-market values;*
- *to improve stakeholder awareness of socio-economic arguments for sustainable land management (SLM);*
- *to prevent the loss of natural capital, preserve ecosystem services, combat climate change, and address food, energy and water security.*

## ELD's core partners and contributors include



## Similar initiatives under other conventions

- Environmental valuation methodologies have become significantly more prominent over the past years.
- Several discussion platforms and initiatives were launched in this sense in support of the three major environmental conventions:
  - Convention on Climate Change (UNFCCC)
  - Convention on Biodiversity Protection (UNCBD)
  - Convention on Combatting Desertification (UNCCD)



## Reports on the economics of climate change, biodiversity loss and land degradation

- The UNFCCC published the Stern Review on the Economics of Climate Change in 2006.
- The Economics of Ecosystems and Biodiversity (TEEB) was published in 2008 (Sukhdev, 2008).
- The ELD Initiative, in support of the UNCCD, published its core report The Value of Land in 2015.

ELD Initiative (2015) – [The Value of Land](#)

ELD Initiative (2015) – [The Value of Land \(quick guide\)](#)

## Contribution of ELD to the Sustainable Development Goals (SDGs)

The ELD Initiative basically contributes to the achievement of two targets under SDG 15



**PROTECT, RESTORE AND PROMOTE SUSTAINABLE USE OF TERRESTRIAL ECOSYSTEMS, SUSTAINABLY MANAGE FORESTS, COMBAT DESERTIFICATION, AND HALT AND REVERSE LAND DEGRADATION AND HALT BIODIVERSITY LOSS**

## SDGs 15.3 and 15.9



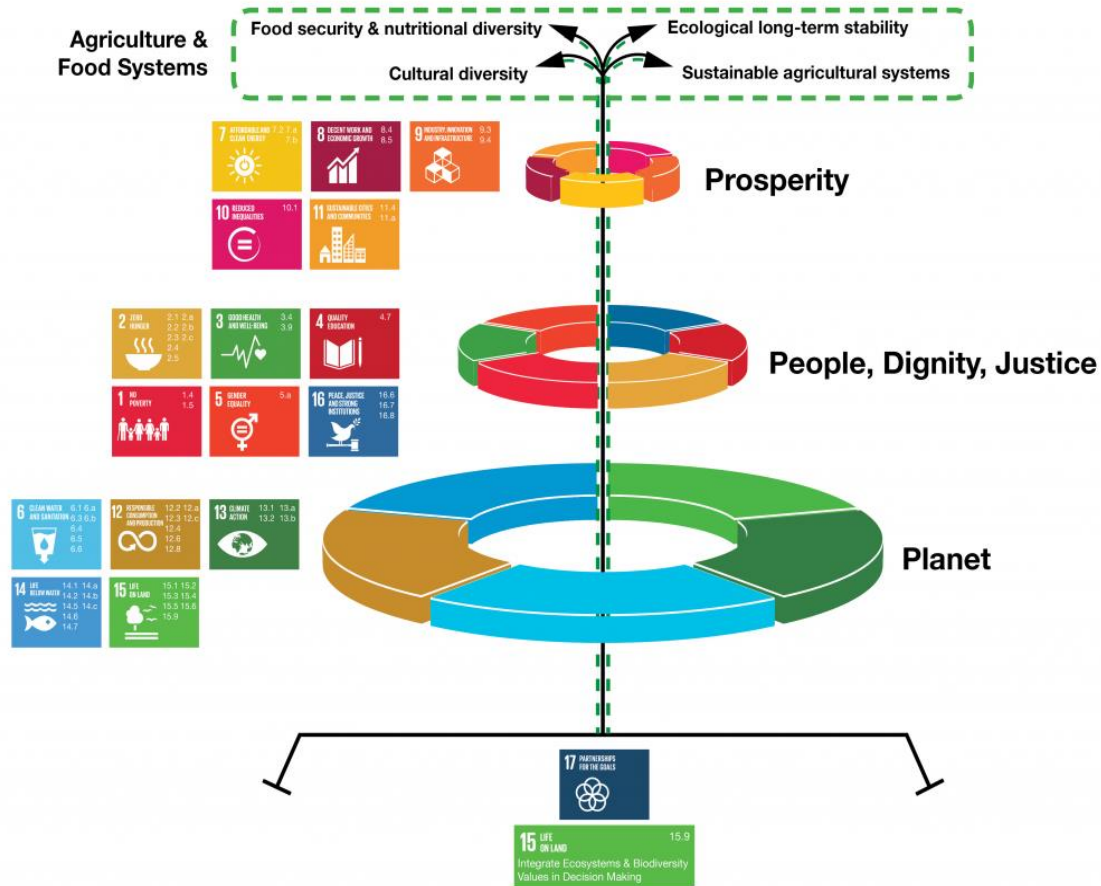
*15.3: By 2030, combat desertification, restore degraded land and soil, including land affected by desertification, drought and floods, and strive to achieve a **land degradation-neutral world (LDN)***



*“A state whereby the amount and quality of land resources necessary to support ecosystem functions and services and enhance food security remain stable or increase within specified temporal and spatial scales and ecosystems”*

*15.9: By 2020, **integrate ecosystems and biodiversity values** into national and local planning, development processes and poverty reduction strategies, and accounts*

# Contribution of SDG 15 to other SDGs



Source: UNEP-TEEB

## Core activities of ELD

- ELD developed a **holistic framework** for the consideration of the economic values of land in political decision-making processes;
- ELD estimates **economic benefits deriving from sustainable land management practices** and compares them to the costs of these practices as a basis for investment and policy decisions;
- Based on results from cost-benefit analysis, ELD sharpens **awareness** of the socio-economic value of land and related ecosystem services;
- ELD proposes effective **solutions, policies, and activities to reduce and reverse land degradation.**

→ *Economic arguments can be strong drivers for sustainable land use!*

## ELD's 6+1 step approach

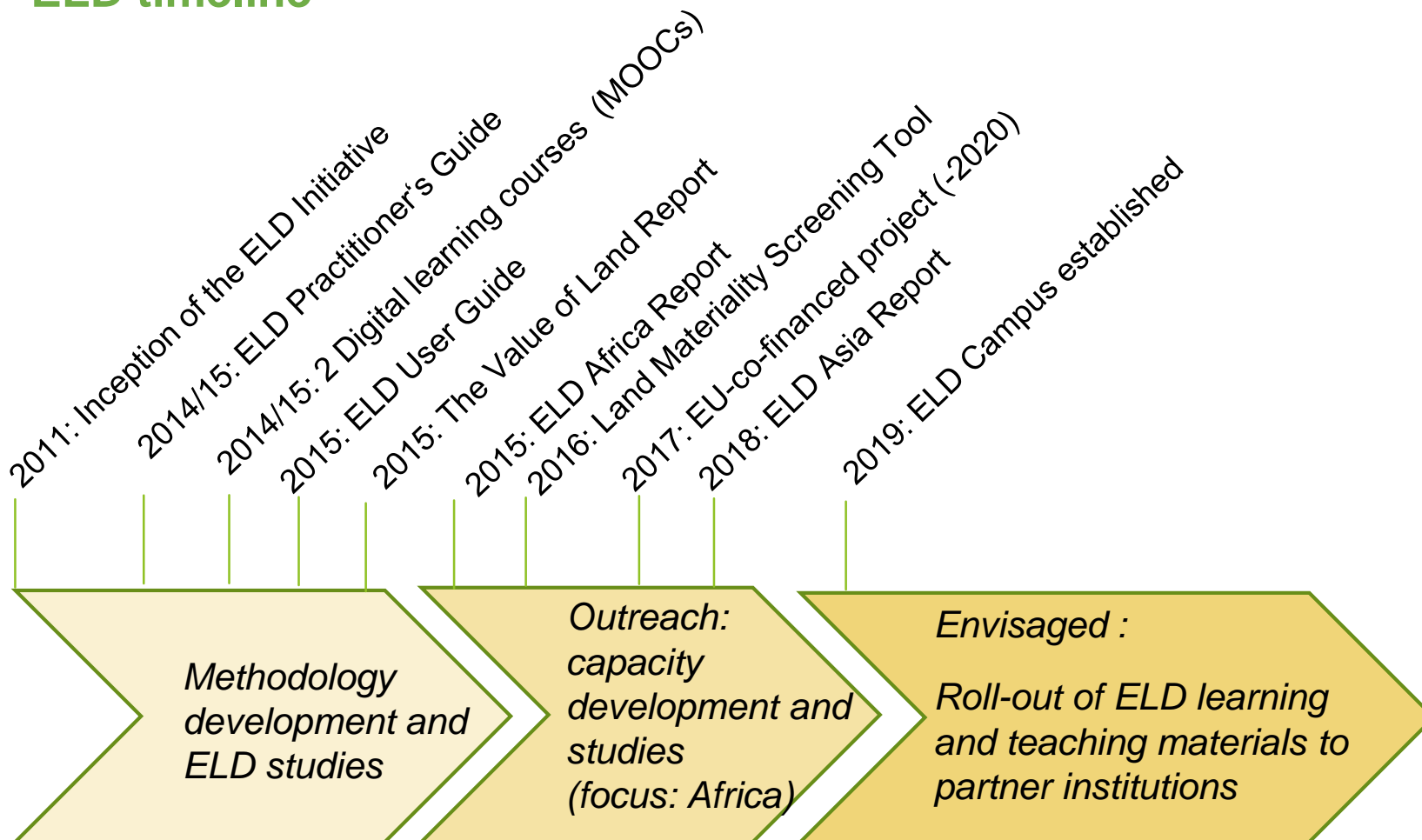
ELD studies quantify the costs of land degradation as well as the economic benefits of SLM, using the 6+1 approach:

1. *Inception- definition of the objective and scope of the study*
2. *Analysis and description of the geographical characteristics*
3. *Identification of ecosystem services types*
4. *Analysis of the role of ecosystem services in community livelihoods and economic valuation*
5. *Scenario development based on land degradation patterns, pressures and trends*
6. *Cost-benefit analysis (business as usual versus action!) and decision-making*

6+1 step: *Take action!*

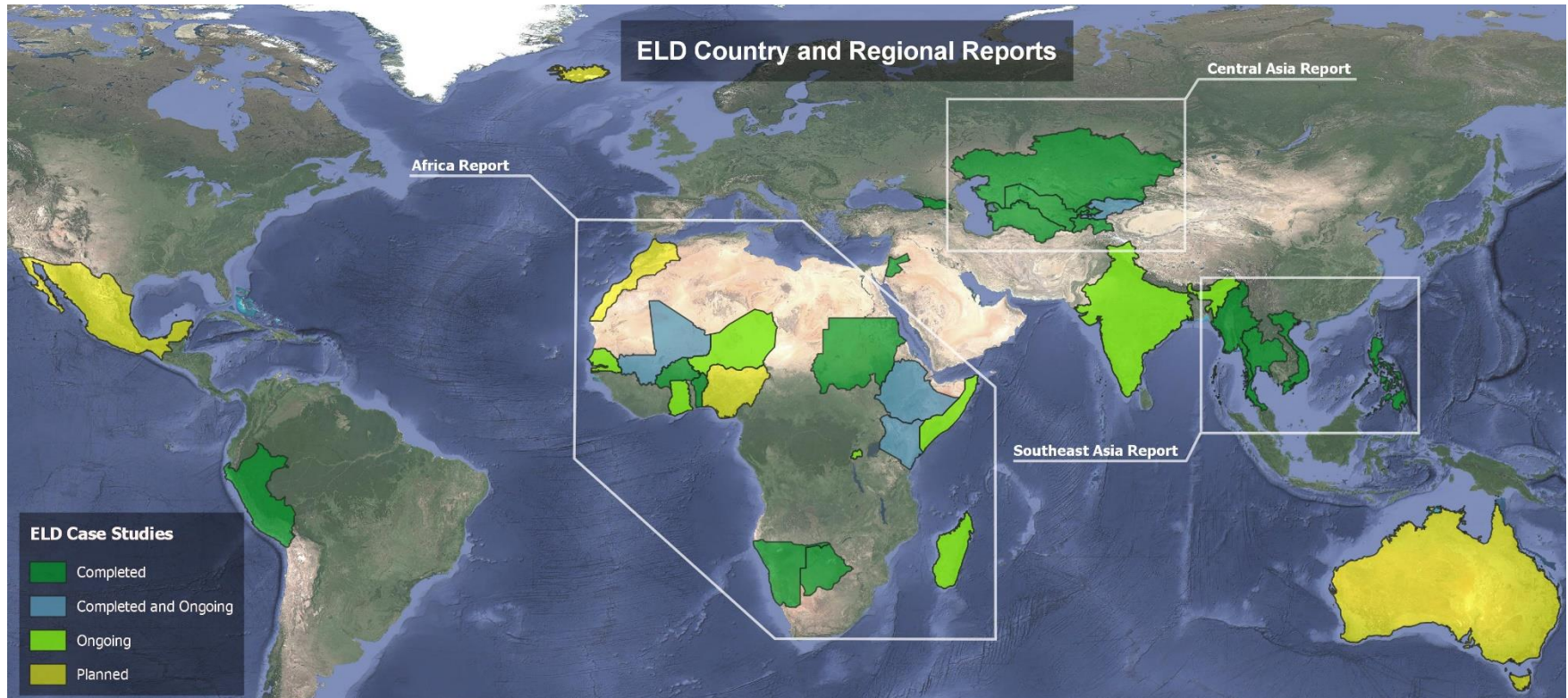


## ELD timeline



Please find a [detailed timeline](#) as well as further information on case studies, publications and capacity building at [www.eld-initiative.org](http://www.eld-initiative.org) !

## ELD studies so far





## National activities: ELD's current core project (2017-2020)

- Currently, the ELD Initiative works in eight African countries under the umbrella of the EU-BMZ co-financed "*Reversing Land Degradation in Africa by Scaling-up EverGreen Agriculture*" Project
- Partner countries are: **Senegal, Mali, Niger, Ethiopia, Ghana, Rwanda, Kenya, and Somalia**
- More than 100 experts from research and policy have received training in the ELD 6+1 approach



Implemented by



## ELD's current core project

- ELD studies focus on **land degradation hotspots** (defined in the LDN process) and economically viable SLM options for ongoing in all countries
- The studies are led by the national and local partner institutions under ELD guidance and supervision
- the ELD Initiative encourages high-level policy dialogues on the need for investments into SLM. It does this with project partners including ICRAF, international NGOs and GIZ projects in the countries



Implemented by



## Video: The Economics of Land Degradation (ELD) Initiative at a glance



## Further information and reading on ELD:

### **Script for this module**

### **Introductory ELD material**

ELD Initiative (2013) – [Brochure](#)

ELD Initiative (2015) – [The Value of Land](#)

ELD Initiative (2015) – [The Value of Land \(quick guide\)](#)

### **Further ELD material**

[ELD publications](#) and [case studies](#)

[ELD Digital Learning Courses](#)

[ELD Multi-stakeholder consultations](#)

[Regreening Africa project brochure ELD component](#)

[ELD videos](#)

If you have questions, please contact us:  
[info@eld-initiative.org](mailto:info@eld-initiative.org)

You can find further information on our  
website:  
[www.eld-initiative.org](http://www.eld-initiative.org)

Follow us!

@ELD\_Initiative  
#ELDsolutions

