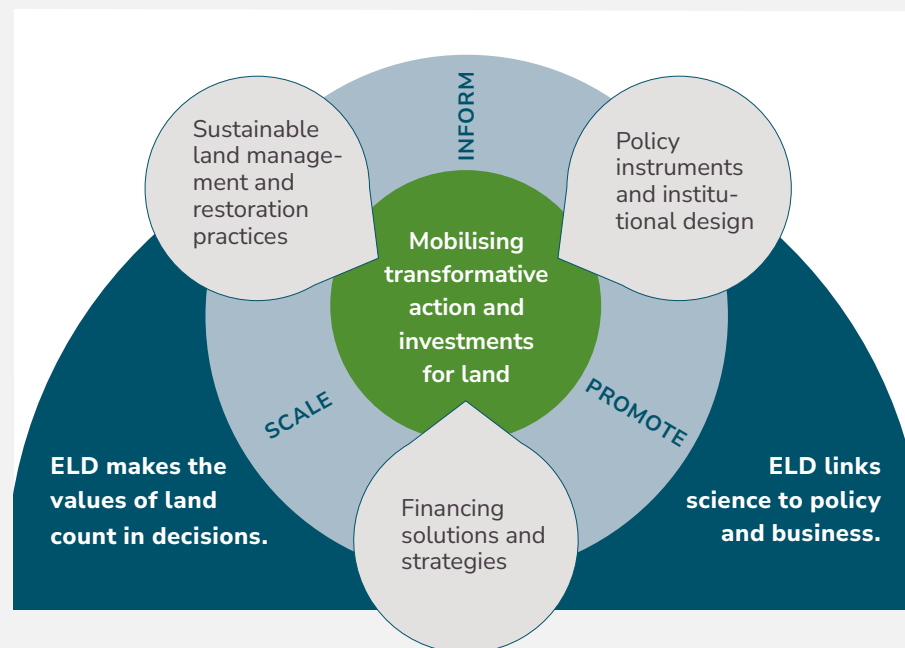


Economics of Land Degradation Initiative

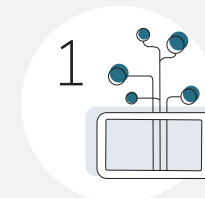
ELD is a global initiative that makes the values of land and its ecosystem services count in decisions – hence uncovering the true costs and benefits of land degradation and sustainable land management. We do this with the aim to inform, promote, and scale land solutions for transformative change; these solutions include sustainable land management practices, policy instruments and institutional design, and financing solutions and strategies. In working at the science-policy-practice interface, ELD brings scientific knowledge and evidence into political and business discourses and decision making.



Mobilising transformative action for land

It is well established today, that conserving and restoring land pays off. But adoption of such land use practices at scale is still lacking. The major challenge going forward is to support decision-makers in taking action and investing in land.

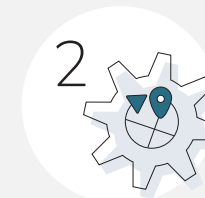
Action areas



1

Provide tools and data

Provide tools, approaches, and methods, as well as datasets on the values of land and ecosystem services and promote their use for informing land use decisions.



2

Promote land solution

Promote the sustainable management of land by informing decision-making with demand driven and context-specific studies and assessment processes at global, regional, national, or local level that support and engage relevant stakeholders.



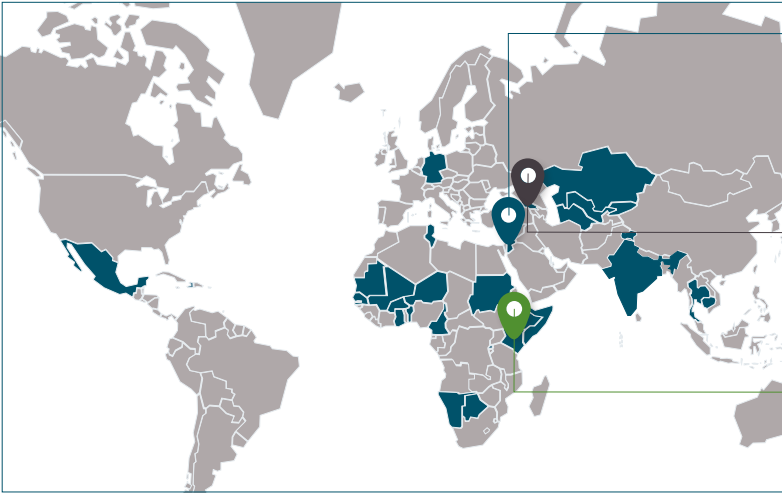
3

Partnerships, capacity-building, and communication

Scale ELD approaches and work through collaborating, exchanging, and learning in a multi-disciplinary network, with strong partnerships, capacity-building, and communication while linking to current policy discourses.

Promoting sustainable land management worldwide: Exemplary impact stories

The ELD Initiative since 2011 implemented 40 case study assessments in 30 countries supporting governments in taking better land decisions.



Jordan | ELD's assessment led to the restoration of 120,000 ha of land, informed the National Rangeland Strategy, led to the initiation of a Payment for Ecosystem Services scheme and helped secure a 13-million GEF project. [▶ Access the study.](#)

Georgia | ELD's assessment informed the first ever law on pastures in Georgia, influenced the National Pastureland Management Policy Document and helped mobilize a 10-million GEF project. [▶ Access the study.](#)

Kenya | ELD's assessment informed the National Agricultural Soil Management Policy and supported the development of a regional rangeland management bill in Isiolo County and larger northern Kenya. [▶ Access the study.](#)

Our partnerships

The ELD Initiative builds its work on project related partnerships and a global network of professionals from research institutions, NGOs, international organisations, development agencies, and consultancies. Its core group is the [▶ ELD Working Group](#), which convenes leading international experts from science, policy, and practice that contribute to the initiative with strategic, operational, and technical support and collaboration.

Founding partners



Notable publications

- ▶ [State of Finance for Nature 2023 report](#) (2023)
- ▶ [The Economics of Drought-Resilient Land report](#) (forthcom.)
- ▶ [Rio Synergies Assessment in Rwanda](#) (2023)
- ▶ [Final Report of the Regreening Africa Project](#) (2024)

Learn more about our [▶ projects and work](#)

Get access to the [▶ ELD knowledge hub](#)

- ▶ info@eld-initiative.org
- ▶ www.eld-initiative.org

